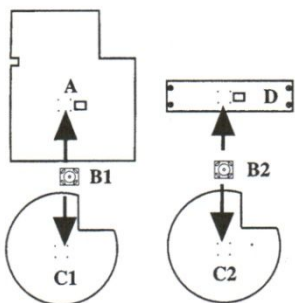


Parts List

The following parts are included in the carton. Separate and check to see that all parts are accounted for before starting to assemble. If you are missing any parts, call the customer service number listed below and request that the missing parts be sent to you.

- | | |
|-------------------------|--------------------------|
| A. Bottom Shelf (1) | H. Door Frame (1) |
| B. Metal Turn Plate (2) | I. Left Side Panel (1) |
| C. Easy Reach Trays (2) | J. Left Rear Panel (1) |
| D. Top Shelf (1) | K. Toe Kick Plate A (1) |
| E. Right Side Panel (1) | L. Toe Kick Plate B (1) |
| F. Right Back Panel (1) | |
| G. Door Assembly (1) | Screws: 16 short, 4 long |

Assembling the Easy Reach Trays



Step 1. Bottom Easy Reach Tray Assembly: Place the bottom shelf (A) on a flat, dry working area, with the 4 screw guide holes located as shown on Figure 1 facing up. Place the metal turn plate (B) on item A location over the screw hole guides. Using 4 of the short screws, fasten the bottom half of the metal turn plate. (Note: You will have to turn the 2 halves of the metal plate to get access with a screwdriver to put the screws in).

Step 2. Place one of the easy reach turn trays (C) down with the bottom facing up (the bottom side is the side with the 4 screw guide holes). Take the bottom shelf (A) with the metal turn plate (B) and turn the top half of the metal plate so that the screw hole in the metal plate is visible through the cut out hole in the bottom shelf. With the metal turn plate facing down, align over the screw holes in the tray (C) (use the cut out hole to see through for aligning). Through the cut out, using the short screws, fasten the metal turn plate to the easy torn tray (C). Turn the bottom shelf so that the next screw hole is located making sure the hole in the metal aligns with the screw guide hole in the tray. Repeat for all screw holes.

Step 3. Using items D, B2, and C2, repeat the steps as shown above for the bottom easy reach tray assembly.

Assembling the Cabinet Box Part A

Step 1. Starting with the right side panel (E), place the side panel down on a soft, clean cloth in your work area with the connectors facing up.



- Step 2. Take the right rear back panel (F) and turn up on edge to align the cam lock connectors with the connectors on the right side panel (E), making sure the connectors are aligned and flush (ref. Figure 2). Using a flat tip screwdriver, turn the cam lock clockwise to tighten (ref. Figure 3).
- Step 3. Take the door assembly (G) and align with the front edge of the right side panel (E), the side panel is to fit into the step cut in the frame on the door assembly (G) and the cam connectors are to be aligned and flush (ref. Figure 2). Using the screwdriver, tighten the cam locks.
- Step 4. Take the door frame (H) and align with the connectors on Item F, Item G (ref. Figure 2). Make sure that the cam connectors are aligned and flush, then using the screwdriver tighten the cam locks.
- Step 5. Take the left side panel (I) and fit into the step cut in the door frame (H) and align the cam connectors (ref. Figure 2). Make sure that the cam connectors are aligned and flush, then using the screwdriver, tighten the cam locks.

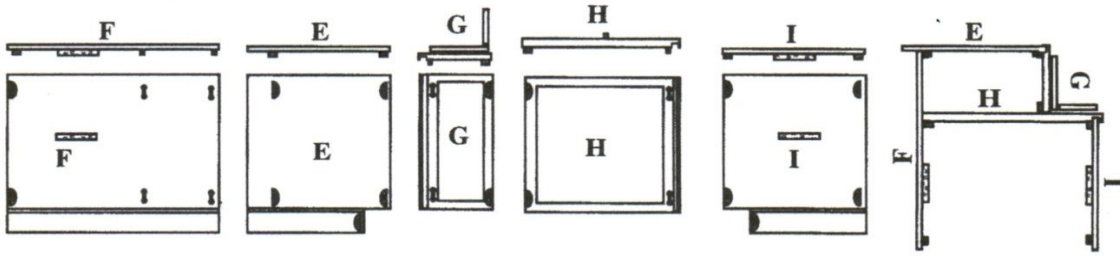


Figure 2

Figure 3 (Cam Connector)

Cabinet Box Assembly Part B (Putting in the Easy Reach Shelves)

- Step 1. Take the bottom easy turn tray assembly with the tray up and the cut out on the right side and tip on an angle and slide into the assembled cabinet (ref. Figure 4). Once the cut out on the bottom shelf is located around the frame of item H, lower so the bottom shelf fits into the cut slot in items E, F, and I.
- Step 2. Make sure that the bottom tray assembly is complete in position, then place the left side back panel (J) into position, aligning the cam connectors with the connectors in items F and I, making sure that the bottom shelf fits into the cut slot in item J. Once item J is in position, make sure that the cam connectors are flush, then tighten with the screwdriver.
- Step 3. Turn the cabinet upright and position the top easy turn shelf assembly onto the shelf support blocks on items F and I. With the doors closed, align the position of the tray and with eh (4) long screw fasten the top tray assembly to the shelf support block.

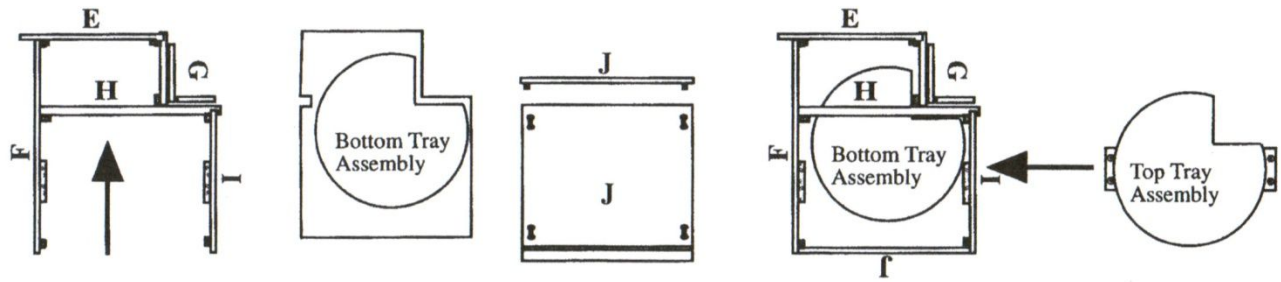


Figure 4

Toe Kick Plate Assembly

- Step 1. Placing the cabinet on its side with panel item J down, attach the toe kick plate using the cam connectors.
- Step 2. Take the toe kick plate A (K) and align to the connectors to form an L shape. Make sure that the connectors are aligned flush, then turn the cam lock to tighten.
- Step 3. Take the toe kick plates from step one above and align to the connector on the bottom of items E and I (right and left side panels). Make sure that the connectors are aligned and flush, then turn the cam lock with a screwdriver to tighten.

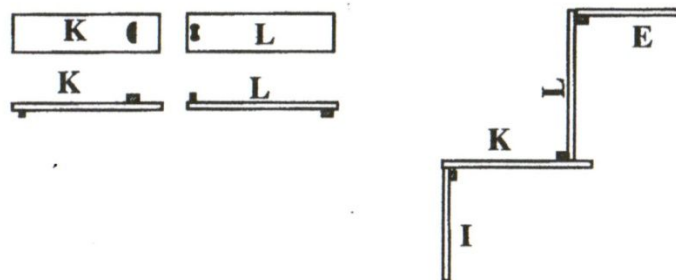


Figure 5

CAUTION: THESE CABINETS ARE NOT DRILLED FOR HARDWARE, SO THAT YOU MAY SELECT THE STYLE AND FINISH FOR YOUR PERSONAL DÉCOR. PLEASE BE CAREFUL AND CHECK YOUR MEASUREMENTS SEVERAL TIMES PRIOR TO DRILLING HOLES AS THE PROODUCT WARRANTY DOES NOT COVER DAMAGE OR PROBLEMS CAUSED BY MISS-DRILLING.